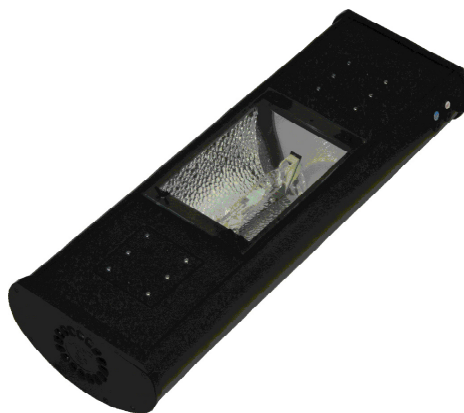


# UNLEASH THE POWER OF THE SUN & MOON

- High Intensity PowerPaq 14,000K HQI metal halide lighting - available in both 150 watt & 250 watt
- LED Panels provide both blue & white lunar lighting
- Microprocessor based driving system - 15% more light output\*\*



- **STAND-ALONE PERFORMANCE** - The SunPod produces an enormous amount of light and cuts through water to even the deepest depths. The PowerPaq 14,000K HQI metal halide(s) produce the energy your corals will need while also providing the natural shimmering effect found on coral reefs. Powered by our proprietary microprocessor based electronic driving system, the high-intensity blue light produced by the 14,000K PowerPaq HQI is so brilliant - no other supplemental actinic lamps are required.

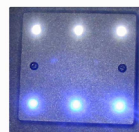
- **POWER FEATURES** - Housed in a sleek aluminum enclosure, the SunPod features an integrated quiet cooling fan and strategically placed side vents - making for a really cool fixture. Hammertone HQI reflector pumps up the light output - all being protected with a sealed glass lens. Plug-and-Play mounting features allow the SunPod to be used on any tank!



- **NANO-SIZE AVAILABLE** - The slim, narrow design of the SunPod (measures only 8.25" W x 4.5" H) allows it to be used even on the most narrow of tanks. Our small 16.5" and 20" SunPods even fit most Nano-Aquariums, 10-Gallon Aquariums and Mini-bow style tanks!

- **PANELIT** - The SunPod is the world's first and only fixture to feature both Blue and White Lunar Lights mounted on a removable LED panel. Each color is independently controlled - allowing you to use both colors for a gradual ramp up, or one color for nocturnal viewing.

Model# 1062 shown w/  
Docking Mounts



LED Panel

- **WHATS INCLUDED** - 150 watt 20" models include 14,000K PowerPaq HQI lamp, LED panels, internal electronic driving system, docking mounts and a hanging/canopy mount kit. 150 watt models 24" and larger include 14,000K PowerPaq HQI lamp(s), LED panels, internal electronic driving system, docking mounts and a 24-hour automatic timer. 250 watt versions feature remote fan-cooled magnetic ballasts, 24-hour timers, docking mounts & hanging kit.

2640 Business Park Dr., Vista, CA 92081  
Phone: 760-727-7011 • Fax: 760-727-7066  
Web: [current-usa.com](http://current-usa.com) • Email: [info@current-usa.com](mailto:info@current-usa.com)

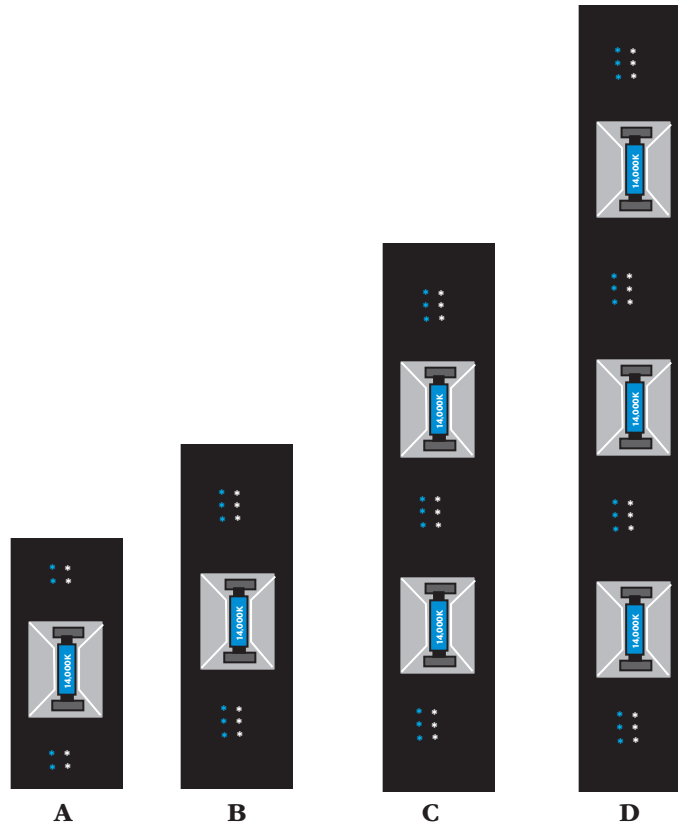
**SUNPOD**<sup>TM</sup>  
Metal Halide HQI Fixtures

# SUNPOD HQI

## SPECIFICATIONS

Model	Length	14,000K	Lunar Light	Hanging Automatic		Product	Total	Total	Config	Shipping
		PowerPac	Blue/White	Kit	Timer	Dimensions	Watts	Amps		Weight
1058	16.5"	1x70watt	4/4	Yes	No	16.5" x 8.25" x 4.5"	70	0.6	A	10 lbs.
1059	20"	1x70watt	6/6	Yes	No	20" x 8.25" x 4.5"	70	0.6	B	12 lbs.
1060	20"	1x150watt	6/6	Yes	No	20" x 8.25" x 4.5"	150	1.3	B	12 lbs.
1061	24"	1x150watt	6/6	No	Yes	24" x 8.25" x 4.5"	150	1.3	B	15 lbs.
1062	30"	1x150watt	6/6	No	Yes	30" x 8.25" x 4.5"	150	1.3	B	17 lbs.
1163	36"	2x150watt	9/9	No	Yes	36" x 8.25" x 4.5"	300	2.6	C	25 lbs.
1064	48"	2x150watt	9/9	No	Yes	48" x 8.25" x 4.5"	300	2.6	C	30 lbs.
1065	60"	3x150watt	12/12	No	Yes	60" x 8.25" x 4.5"	450	3.9	D	35 lbs.
1066	72"	3x150watt	12/12	No	Yes	72" x 8.25" x 4.5"	450	3.9	D	55 lbs.
1160	20"	1x250watt	6/6	Yes	Yes	20" x 8.25" x 4.5"	250	2.2	B	15 lbs.
1161	24"	1x250watt	6/6	Yes	Yes	24" x 8.25" x 4.5"	250	2.2	B	17 lbs.
1162	30"	1x250watt	6/6	Yes	Yes	30" x 8.25" x 4.5"	250	2.2	B	20 lbs.
1163	36"	2x250watt	9/9	Yes	Yes	36" x 8.25" x 4.5"	500	4.4	C	25 lbs.
1164	48"	2x250watt	9/9	Yes	Yes	48" x 8.25" x 4.5"	500	4.4	C	30 lbs.
1165	60"	3x250watt	12/12	Yes	Yes	60" x 8.25" x 4.5"	750	6.6	D	40 lbs.
1166	72"	3x250watt	12/12	Yes	Yes	72" x 8.25" x 4.5"	750	6.6	D	55 lbs.

## CONFIGURATIONS



2640 Business Park Dr., Vista, CA 92081  
 Phone: 760-727-7011 • Fax: 760-727-7066  
 Web: [current-usa.com](http://current-usa.com) • Email: [info@current-usa.com](mailto:info@current-usa.com)