

HQI PENDANT™

Metal Halide Lighting System

Instructions for Models
#1053

| | |
|---------------------------------------|--------|
| Warning and Safety Instructions | Page 2 |
| Installation | Page 3 |
| Maintenance | Page 6 |
| Warranty | Page 7 |

JEE 08/07



CURRENT

WHAT'S NEXT

EMAIL: INFO@CURRENT-USA.COM
WWW: WWW.CURRENT-USA.COM

SAFETY INSTRUCTIONS

WARNING

To guard against injury, basic safety precautions should be observed, including the following:

READ AND FOLLOW ALL SAFETY INSTRUCTIONS

DANGER

To avoid possible electric shock, special care should be taken since water is employed in the use of aquarium equipment. For each of the following situations, do not attempt repairs by yourself. Return the appliance to your retailer or discard the appliance.

- If the appliance falls into the water, or water drips onto the unit, **DON'T** reach for it! First unplug it and then retrieve it. If electrical components of the appliance get wet, unplug the appliance immediately.
- Always unplug appliance from an outlet when not in use, before putting on or taking off parts, and before cleaning. Never yank cord to pull plug from outlet. Grasp the plug fully and pull out to disconnect.
- Carefully examine the appliance after replacement. It should not be plugged in if there is water on parts not intended to be wet.
- Do not operate any appliance if it has a damaged cord or plug, or if it is malfunctioning or has been dropped or damaged in any manner.
- Do not use the HQI Pendant for anything other than its intended use. The use of attachments not recommended or sold by Current USA may cause unsafe conditions.
- Exposing power cords to water may cause electrical short and fire.
- Do not allow water or salt to come in contact with lighting fixture or power cords.

SAVE THESE INSTRUCTIONS

GROUND FAULT CIRCUIT INTERRUPTER PROTECTION

To comply with the National Electrical Code (NFPA 70), and to provide additional protection from the risk of shock, this unit **MUST** be connected to a ground fault circuit interrupter (GFCI) outlet at all times. Do not use extension cords. **WARNING** – To reduce the risk of electrocution, keep all connections dry and off the ground. Do not touch plug with wet hands.

INSTALLATION

CONGRATULATIONS ON PURCHASING YOUR NEW HQI PENDANT SYSTEM. THIS PENDANT IS DESIGNED FOR THE SOLANA AQUARIUM SERIES STANDS. IF USING WITH OTHER STANDS, PLEASE CONSULT YOUR STORE TO ENSURE PROPER SIZING.

PLEASE CAREFULLY READ ALL INSTRUCTIONS AND WARNINGS BELOW AND ENJOY YOUR NEW LIGHTING SYSTEM.

In order to validate your warranty, please fill out the enclosed warranty registration card or go online to our website <http://www.current-usa.com> to register your product electronically.

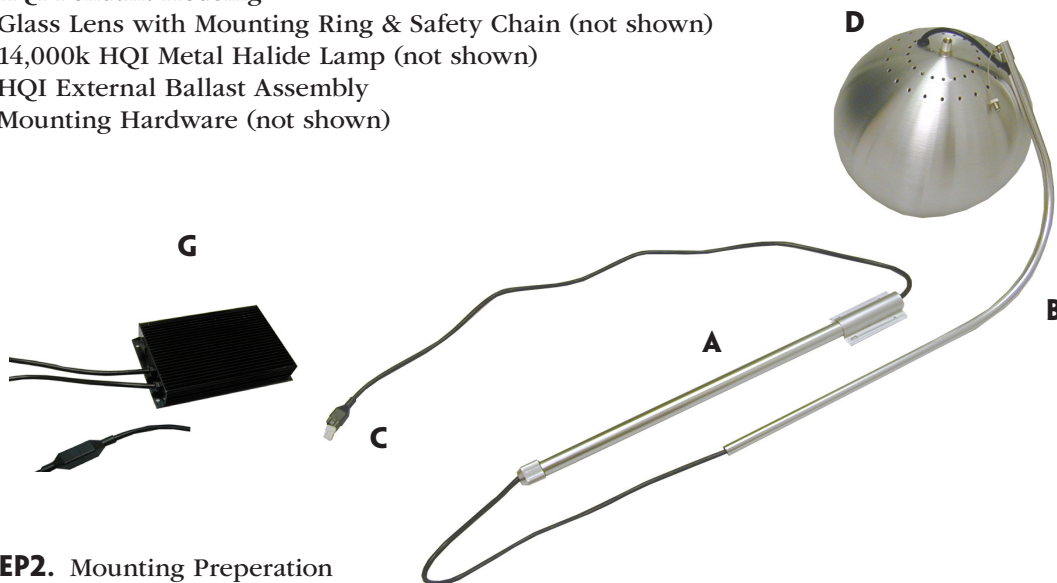
Note: Read all instruction and warnings listed within this manual. Please also read all warnings affixed to the fixture.

INSTRUCTIONS

STEP 1. Unpacking the HQI Pendant

Carefully remove the lighting fixture and components from the packaging, ensuring all parts are enclosed and undamaged. The fixture consists of the following components that have been pre-assembled and only require minor final connections and attachment to the stand:

- A Attachment Post
- B Suspension arm
- C Ballast Connection Cord w/quick disconnect
- D HQI Pendant Housing
- E Glass Lens with Mounting Ring & Safety Chain (not shown)
- F 14,000k HQI Metal Halide Lamp (not shown)
- G HQI External Ballast Assembly
- H Mounting Hardware (not shown)



STEP 2. Mounting Preparation

Before mounting attachment post (A) to the stand it will be necessary to determine the mounting location so that the pendant is positioned correctly over the aquarium. Connect the attachment post (A) to the suspension arm (B) by inserting the tubing from the suspension arm into the compression fitting on the attachment post. It may be necessary to pull the ballast connection cord (C) out from the end of the attachment post to remove any slack.

INSTALLATION



Figure 1



Figure 2

Thread the fitting on the end of the suspension arm into the threaded hole (Figure 1) on top of the HQI pendant housing (D). Once the attachments have been made, position the attachment post against the desired location of attachment on the stand and rotate the suspension arm so that the pendant is positioned as desired over the aquarium (Figure 2). Move the position of the attachment post if necessary. When the desired location is found, mark the location of the holes of the attachment post bracket against the stand with a pencil.



Figure 3

STEP 3. Mounting the HQI Pendant

For easiest mounting it may be necessary to disconnect the suspension arm and Pendant housing from the attachment post. Use the enclosed screws and attach the bracket on the attachment post to the stand (Figure 3). Ensure that the attachment post is firmly in place before proceeding with the installation. Attach the suspension arm (B) and pendant housing (D) as performed in step 2.

INSTALLATION

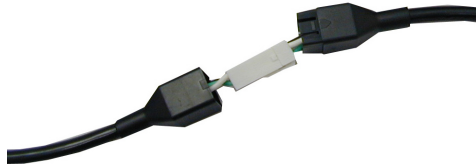


Figure 4

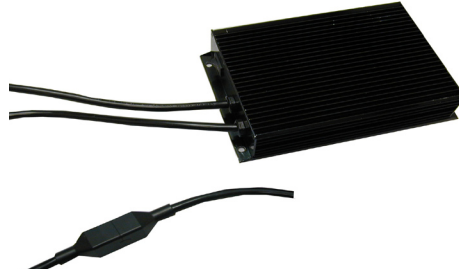


Figure 5

STEP 4. Ballast Connection

Before connecting the ballast (G) to the pendant, ensure that the ballast is disconnected from any AC power source and not plugged into an electrical outlet. Connect the quick disconnect from the ballast connection cord (C) to the connection coming off the ballast (G) and attach the outer black covering over the quick disconnect connection (Figures 4 & 5). Ensure that both the ballast and connections are located in a dry location safe from any moisture.



Figure 6

STEP 5. Checking the HQI Lamp

Once the ballast connection is secured, ensure that the HQI lamp is safely in place. Remove the glass lens & mounting ring (E) by pulling the ring out (Figure 6) from the pendant housing (D). Grasp the lamp by the end(s), never touching the middle portion of the lamp-oils from your fingers will affect the lamp output and lifespan. Ensure the lamp is seated firmly in the socket and replace the glass lens and mounting ring into the pendant housing. When replacing or checking the lamp, always make sure the unit has been disconnected from any AC power source and that the lamp has been allowed to cool.

CONGRATULATIONS...YOUR HQI PENDANT IS NOW OPERATIONAL.

MAINTENANCE

ADJUSTMENT

This HQI Pendant can be adjusted vertically in two locations - the suspension arm and at the pendant housing itself. To adjust at the arm, simply loosen the threaded connection between the post (A) and arm (B), adjust to desired height and re-tighten. To adjust at the housing, push the adjustment pin (located where the suspension wire exits the arm), pull the wire vertically to desired height and allow the pin to pop out. The pin will automatically hold the pendant at the desired height.

MAINTENANCE

A. The HQI Pendant housing, suspension arm and attachment post should be kept free of dirt, salt and moisture. Using a clean, soft towel and small amount of water, gently clean these components weekly.

B. Remove the glass lens and mounting ring from the HQI pendant monthly and use a clean, soft towel and small amount of water to remove any salt or dirt. The interior portion of the HQI pendant should not need any maintenance if the glass lens and mounting ring is kept in place.

TROUBLESHOOTING

PROBLEM

HQI Lamp not lighting up or flickers and shuts off after a short time

CAUSE / SOLUTION

Lamp not inserted into the socket correctly:

- Make sure that both ends of the HQI lamp are securely in place in the socket of the HQI pendant

Ballast not plugged in or not connected correctly to the fixture:

- Make sure the ballast connection to the ballast connection cord is secure and free of any moisture or salt

Ballast is plugged into an extension cord or power strip where voltage may be reduced:

- The ballast should be plugged into a dedicated GFCI protected outlet to ensure required voltage for starting up the HQI lamp.

Lamp has reached end of lifespan or is defective:

- Replace the lamp with Current-USA PowerPaq HQI lamp

Ballast has reached end of lifespan or is defective:

- Replace the HQI ballast with a Current-USA remote HQI replacement ballast

PROBLEM

Suspension Arm is wobbling

CAUSE / SOLUTION

Arm is not inserted far enough inside the attachment post or the compression fitting has not been securely tightened:

- Make sure the arm is inserted securely into the attachment post tubing and that the compression fitting is firmly tightened (hand tighten only)

WARRANTY

CURRENT USA, INC. ONE-YEAR LIMITED WARRANTY

Current USA, Inc. warrants this product against defects in materials and workmanship for a period of ONE (1) YEAR from the date of original retail purchase. Light Bulbs carry a 3 month warranty.

Note: Current-USA, Inc. One-Year Limited Warranty does not cover damage caused by the following: Improper installation, saltwater corrosion, and electrical surges.

Warranty on all Products, including Aquariums, is limited to replacement of the product and does not cover fish loss, personal injury, property loss or direct, incidental or consequential damage arising to the use of this product.

If you discover a defect, Current USA, Inc. will, at its option, repair or replace the product at no charge to you, provided you return it during the warranty period. It is required that you present this warranty card and a copy of the bill of sale as proof of original purchase date, in the event the product needs repairs, within the warranty period. Please see your dealer for return options. This warranty applies only to products by or for Current USA, Inc. that can be identified by trade name, or logo affixed to them. Current-USA, Inc. does not warrant any products that are not Current-USA, Inc. products. This warranty does not apply if the product has been damaged by accident, abuse, misuse or misapplication or if the product has been modified without the written permission of Current-USA, Inc.; or if any Current-USA, Inc. logos have been removed or defaced.

THE WARRANTY AND REMEDIES SET FORTH ABOVE ARE EXCLUSIVE AND IN LIEU OF ALL OTHERS, WHETHER ORAL OR WRITTEN, EXPRESS OR IMPLIED. Current USA, Inc. SPECIFICALLY DISCLAIMS ANY AND ALL IMPLIED WARRANTIES, INCLUDING BUT NOT LIMITED TO LOST PROFITS, DOWNTIME, GOODWILL, DAMAGE TO OR REPLACEMENT OF EQUIPMENT AND PROPERTY, AND ANY COSTS OF RECOVERING ANIMALS, PLANTS, TANKS OR OTHER AQUARIUM RELATED ITEMS AND/OR EQUIPMENT. Current USA, Inc. IS NOT RESPONSIBLE FOR SPECIAL, INCIDENTAL, OR CONSEQUENTIAL DAMAGES RESULTING FROM ANY BREACH OF WARRANTY, OR REPLACEMENT OF EQUIPMENT OR PROPERTY, OR ANY COSTS OF RECOVERING OR REPRODUCING ANY EQUIPMENT, ANIMALS OR PLANTS USED OR GROWN WITH Current USA, Inc. PRODUCTS.

Some jurisdictions do not allow the exclusion or limitation of incidental or consequential damages or exclusions of implied warranties, so the above limitations or exclusions may not apply to you. This warranty gives you specific legal rights, and you may also have other rights that vary from jurisdiction to jurisdiction.